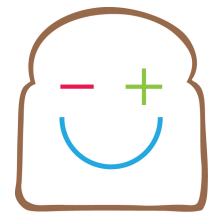


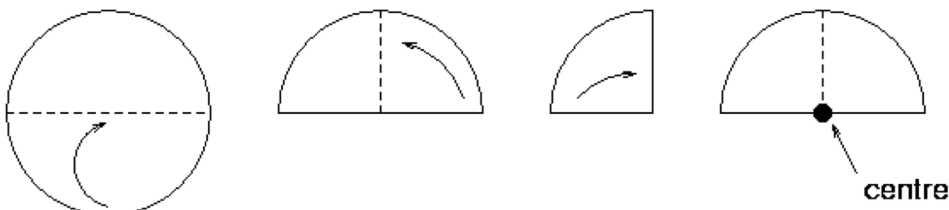
Make a paper Snowflake



maths on toast
the family maths charity

Draw a circle on a piece of paper (you can use a compass or draw around something) and cut it out.

1 Fold the circle in half, then half again-to find the centre of the circle. Then open it back out to a half-circle.



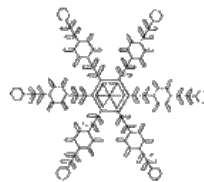
2 Fold the half-circle into three equal parts, with a point at the centre of the circle.



3 Cut away pieces from the folded sides, and from the curved edge.



4 Open it out and you'll have a snowflake!
You could add decoration with metallic pens or glitter.



Why's this maths?

You're exploring shape, space and symmetry – and how accuracy is important in maths.

And what's Maths on Toast?

We're a charity that makes maths family fun.
More at www.mathsontost.org.uk